



Page 1 of 13
Date: Aug. 2012
Replaces: Form DD108G
Dated: August 2008

The IC-200-H is a self-propelled Industrial Crane designed for material handling and installation, maintenance and repair of equipment, with special features of self-loading cargo decks, 4-wheel steer, and front-wheel drive (4-wheel drive optional). The basic unit consists of a chassis and hydraulic boom assembly. The chassis includes a frame, four hydraulic independently controlled outriggers, engine, torque converter, powershift 4-speed transmission, front planetary drive/steer axle and rear steer-only axle, fuel tank, hydraulic tank, control station, power steering and dual power brakes. The boom assembly includes a hydraulic powered continuous rotation turret, 3 or 4-section telescopic boom, hydraulic boom elevating cylinder, hydraulic boom telescope cylinders and hydraulic powered hoist. A Rated Capacity Limiter is standard.

IC-200-2H:

3-section hydraulically extended boom with capacity of 30,000 pounds (13,600 kg) at a 6-foot (1.8 m) load radius. Horizontal reach of 36 feet (11.0 m) and vertical reach of 45 feet (13.7 m).

IC-200-3H:

4-section proportional hydraulically extended boom with capacity of 30,000 pounds (13,600 kg) at a 6-foot (1.8 m) load radius. Horizontal reach of 50 feet (15.2 m) and vertical reach of 58 feet (17.7 m).

General:

	IC-200-2H	IC-200-3H
Weight:		
Front Axle	13,960 pounds (6,340 kg)	15,390 pounds (6,990 kg)
Rear Axle	14,540 pounds (6,600 kg)	15,690 pounds (7,120 kg)
Total	28,500 pounds (12,940 kg)	31,080 pounds (14,110 kg)
Length:		
Overall	22 feet, 6 inches (6.86 m)	22 feet, 10 inches (6.96 m)
Chassis	14 feet, 11 inches (4.55 m)	14 feet, 11 inches (4.55 m)
Width:	7 feet, 10.5 inches (2.40 m)	
Height:		
Overall	8 feet (2.45 m)	
Deck	47 inches (1.19 m)	
Wheelbase:	97 inches (2.46 m)	
Ground Clearance:	11 inches (349 mm)	
Angle of Approach:	24 degrees	

General (Cont'd):

Angle of Departure:	24 degrees
Outriggers:	
Spread	11 feet, 10 inches (3.61 m)
Penetration	3.5 inches (89 mm)
Turning Radius:	
4-Wheel Steering	14 feet, 5 inches (4.42 m)

Aisle Width for 90° Turn:	11 feet, 10 inches (3.61 m)
Steering Modes:	Rear Steer, Round Steer, Crab Steer
Road Speed:	18 MPH (29.0 km/h)
Gradeability (Calculated):	54 percent (28 degrees) ¹
Grade Limit:	15 percent (9 degrees) ¹

1) Calculated values based on GM 4.3L Gasoline Engine.
 (Wheels may spin before these values are reached.)

<u>Boom Movement:</u>	<u>IC-200-2H</u>	<u>IC-200-3H</u>
Rotation	Continuous	Continuous
Elevation	0 to 73 degrees	0 to 73 degrees
Telescope	21 feet (6.40 m)	34.5 feet (10.52 m)

<u>Boom Speeds:</u>		
Rotation	1.7 RPM	1.7 RPM
Elevation	20 seconds	20 seconds
Extension	33 seconds	50 seconds

<u>Sheave Height (Nominal):</u>		
W/O Boom Extension	45 feet, 4 inches (13.8 m)	58 feet, 8 inches (17.90 m)
With Boom Extension	59 feet, 6 inches (18.10 m)	73 feet, 8 inches (22.40 m)

<u>Horizontal Reach:</u>		
W/O Boom Extension	36 feet (11.0 m)	50 feet (15.2 m)
With Boom Extension	51 feet (15.5 m)	66 feet (20.1 m)

Engine:

Standard:

GM 4.3L V-6, EPA Tier 2 Woodward Dual Fuel:

GM Model 4.3L V-6 industrial gasoline engine with multiport electronic fuel injection, dual fuel, catalytic converter, and engine management system. Water cooled, 262 CI (4.3L) displacement, 4-inch (102 mm) bore, 3.48-inch (88 mm) stroke, 93 HP (69 kW) at governed speed of 2500 RPM. Maximum torque 206 ft-lbs (279 Nm) at 1650 RPM. Includes special exhaust valves, seats and valve rotators for use with LPG, 70-amp alternator, 30-gallon (113L) fuel tank and 43-pound (19.5 kg) LPG tank. High temperature and low oil pressure shutdown is included in engine management system. Throttle control switch for setting engine speed at 1200 or 1800 RPM.

Optional Engines and Engine Accessories:

Diesel Engine:

Cummins QSB3.3L Turbo, EPA Tier 4i:

Cummins QSB3.3 Tier 4 Interim turbocharged diesel engine. Water cooled, 4-cylinder, 199 CID (3.3L), 3.74-inch (95 mm) bore, 4.53-inch (115 mm) stroke, 100 HP (75 kW) at governed speed of 2600 RPM. Maximum torque is 306 ft-lbs (415 Nm) at 1600 RPM. 120-amp alternator included. 30-gallon (114 L) fuel tank capacity. High temperature and low oil pressure shutdown included in engine management system. Throttle control switch for setting engine speed at 1200 or 1800 RPM. Charge air cooler, 1500 watt, 120vac block heater, and grid heater included. Net Weight: 200 pounds (91 kg).

Spark Arrester Muffler:

Spark arrester muffler used in addition to standard muffler. Net Weight: 10 pounds (5 kg).

Engine Heater for Dual Fuel Engine Only:

Heater for engine. Engine coolant heater installed with hoses in coolant system to circulate warm water through engine. Plugs into 120V AC extension cord. 1500 watts.

Transmission:**Standard 2-Wheel Drive:**

Powershift transmission with four speeds in forward and reverse. Provides powershifts at any engine speed in any gear. All shifting is done with a single lever electrical control mounted on the steering column. Multiple-disc clutch packs operated by solenoid valves provide reverse, neutral, forward and speed selection. Equipped with oil cooler and filter.

Optional 4-Wheel Drive Transmission:

Same as 2WD transmission with an additional output shaft to drive the rear axle. Electro-hydraulic control for shifting between 2WD and 4WD. This option includes the 4-wheel drive axle listed below.

Transmission gear ratios:**Forward and Reverse (2WD & 4WD)**

1st	5.72 to 1.0
2nd	3.23 to 1.0
3rd	1.77 to 1.0
4th	1.00 to 1.0

Torque Converter:**Standard:**

Stall torque ratio of 2.2:1, attached to engine flywheel.

Front Axle:**Standard:**

Planetary drive/steer front axle with 15.78 to 1.0 ratio. Differential equipped with "limited slip" feature. Driving effort is applied to wheel that has traction. Front axle mounted rigidly to frame.

Calculated Performance:

<u>Gear</u>	<u>Drawbar Pull (pounds)</u>	<u>Travel Speeds (MPH)</u>
1st	17,000*	3
2nd	8,900*	5
3rd	5,100*	10
4th	2,700*	18

*Calculated for GM 4.3L engine. Wheels will spin in 1st or 2nd gear before these values are reached with 2-wheel drive.

Rear Axle:**Standard 2-Wheel Drive:**

Steering axle with 1½ degree oscillation in either direction.

Optional 4-Wheel Drive:

Planetary drive/steer axle with 24.98 to 1.0 ratio. Differential is not "limited slip" in rear axle. 1½ degree oscillation in either direction. (Axle ratio compatible with 4WD transmission output for front axle match.)
Net Weight: 160 pounds (73 kg).

Steering:**Standard:**

Hydraulic steering unit with two, 3-inch (7.6 cm) cylinders attached to each axle. Allows limited steering when engine is not running. Rear axle is the primary steer. An electric switch in the operator's compartment is used to select rear-wheel steering, four-wheel round steering or crab steering. Electronic sensors and control box automatically align the steering when a new mode is selected.

Brakes:**Standard:**

Split-system, four-wheel hydraulically-boosted multiple-plate wet disc brakes. Uses mineral oil. Hand lever actuated disc-type parking brake on transmission.

Tires:**Standard 2-Wheel & 4-Wheel Drive:**

15x22.5, 16-ply rating.

Tire Options:**Non-Marking Pneumatic:**

385/65D22.5 16-ply rating Net Weight: 20 pounds (9 kg).

Foam Filling of Tires:

Foam filling of four IC-200 tires. Net Weight: 2000 pounds (907 kg).

Spare Tire and Wheel Mounted Standard Tire:

Extra wheel with standard tire (15X22.5, 16-ply) mounted, ready for service. Net Weight: 350 pounds (159 kg).

Spare Tire and Wheel Mounted, Non-Marking Pneumatic:

Extra wheel with Non-Marking tire (385/65D22.5, 16 ply) mounted, ready for service. Net Weight: 350 pounds (159 kg).

Chassis:**Standard:****Cargo Deck:**

Total Deck Area: 66 Square Feet (6 m²). A maximum of 17,000 pounds (7,700 kg) may be carried on the deck at creep speed when centered over or between axles. Seven stake pockets are provided along edges of deck for 1-inch (25 mm) pipe stakes. Stakes furnished. Cargo decks have skid resistant coating.

Lifting Rings:

Consists of four rings, one at each corner of the load deck, so sling can be attached for lifting crane. Rings hang below deck surface when not in use.

Steps:

A step is located on each front corner providing access to deck area.

Outriggers:

Four hydraulic outriggers of box -beam construction. Independent control for each outrigger. Hydraulic cylinders are equipped with direct-connected holding valves. Pad dimensions: 11 inches (28 cm) x 16 inches (41 cm).

Pulling Eyes:

Two heavy eyes in front bumper provide for attachment of hook block so main winch line can be used for pulling loads at or near floor level. Also for anchoring tag lines from load on hook.

Tie Downs:

Two holes in the rear bumper (in conjunction with the pulling eyes) provide tie down locations for transporting crane by truck or cargo container.

Accessory Storage Box:

Consists of front deck plate with removable and lockable cover, and box for carrying sheave block and other items. Storage box is 14 inches (35 cm) deep x 10½ inches (26 cm) wide x 36½ inches (93 cm) long.

Headlight and Taillight Grilles:

Consists of welded steel protective grilles for headlights and taillights. Easily removable for replacing bulbs.

Chassis Options and Accessories:**Auxiliary Winch:**

Optional worm gear winch, mounted behind front bumper, with a single lever control at the operator's console. Hydraulic powered to provide bare drum line pull of 10,000 pounds (4,540 kg) at 33 feet per minute (10.2 m/min). Winch drum is 3½ inches (90 mm) in diameter by 10 inches (250 mm) long. This winch includes 115 feet (35 m) of 7/16-inch (11.1 mm) wire rope, hook and 4-way roller guide. This rope can pull 5,800 pounds (2,630 kg) with a safety factor of 3.5:1. Net Weight: 250 pounds (113 kg).

Pintle Hook - Rear:

T-60-AOL Holland pintle hook mounted on rear frame member, provides capacity for 6,000-pound (2,700 kg) tongue weight and 30,000-pound (13,600 kg) trailer weight. Net Weight: 15 pounds (7 kg).

Pintle Hook - Front:

T-60-AOL Holland pintle hook mounted on front frame member, provides same capacity as rear pintle hook. Net Weight: 45 pounds (20 kg).

Rearview Mirrors:

One right-hand and one left-hand mirror, 6 inches (152 mm) wide x 16 inches (406 mm) high, mounted on deck stakes. Pivot out of way when contacted by obstacle at side of deck. Net Weight: 12 pounds (5 kg).

Operator Compartment:**Standard:**

Operator control station provides one-position access to all chassis and crane functions. Includes adjustable operator's seat and retracting seat belt, fire extinguisher, and bubble level.

Drum Rotation Indicator:

Provides tactile feedback to operator when hoist drum is rotating. Feedback device attached to hoist control handle. Feedback is proportional to hoist speed.

Operator Compartment Options and Accessories:**Operator Guard: (Not Available with Cab)**

Tubular steel weldment with heavy expanded steel mesh top section, bolts over the operator's compartment. Net Weight: 60 pounds (27 kg).

Operator Guard Door:

Hinged door covers operator compartment side opening. Has latch handle outside and knob inside. Rubber gasket contacts chassis. Net Weight: 40 pounds (18 kg).

All Weather Cab:

Consists of rigid mounted canopy section and removable hinged door with safety glass. Rugged canopy structure with laminated glass front and top. Door is equipped with a keyed lock to protect operator's station. Includes defroster fan, dome light, 12,400 BTU heater with 2-speed fan, and 12V electric windshield wiper. There are sliding windows in the door and right-hand side. Net Weight: 220 pounds (98 kg).

Cab Heater Only:

Provides 12,400 BTU heater with 2-speed fan for units without All Weather Cab. Net Weight: 12 pounds (5 kg).

Windshield Washer:

Provides reservoir, pump and nozzle for windshield washer.

Floor Mat:

Vinyl mat with foam backing covers floor, front wall, and lower portion of right hand wall of operator's compartment. Net Weight: 5 pounds (2 kg).

Suspension Seat:

Vinyl seat with a small suspension built in. Net Weight: 15 pounds (7 kg).

Deluxe Seat:

Deluxe seat with upholstery springs provides additional operator comfort. Net Weight: 15 pounds (7 kg).

Noise Reduction Kit - Cab:

Includes vinyl floor mats and control valve cover and side panels of foam-backed, perforated vinyl for noise reduction. Net Weight: 15 pounds (7 kg).

Air Conditioning:

Complete system using R134a coolant has combination cooling and heating unit in cab. Net Weight: 125 pounds (57 kg).

Electrical System:**Standard 12 Volt DC:****Battery:**

Gas Units: Group 27 with 540 CCA rating.

Diesel Units: Group 31 with 950 CCA rating.

Lighting Group:

Consists of two 12V lamps, with high and low beams for driving; tail, brake and turn signal lights and backup lights in rear; front turn signals; and emergency flasher switch at operator's station. 12V horn actuated by button located on shifting control.

Instrument Group:

Located at operator's station, includes fuel gauge and hourmeter, which records hours only during actual engine operation. Also included are warning lights for low oil and transmission pressure, check engine, high coolant and transmission temperature, turn signals, high beams, hazard lights, parking brake and four-wheel drive.

Back-Up Alarm:

Provides pulsating sound from a 102 dB alarm when ignition is on and transmission is in reverse. Conforms to SAE J994B.

Outrigger Alarm System:

102 dB alarm with alternating two-tone sound is actuated by a switch when the OUTRIGGER DOWN controls are operated.

Optional Electrical Accessories:**Strobe Lights:**

Two yellow strobe lights, one on each side of turret weight box, for high visibility all around crane. Flashes 60-120 times per minute. Each strobe draws only one-half amp. Includes operator controlled switch. Net Weight: 5 pounds (2 kg).

Rear Work Lights:

Two halogen flood lights mounted between the grille bars in the rear bumper. Includes switch at operator station. Net Weight: 10 pounds (5 kg).

Boom Work Lights:

Two halogen work lights, one on left side of boom to light boom tip, and one on right side of the turret to light ground under boom tip. Includes switch at operator's station. Net Weight: 10 pounds (5 kg).

Hydraulic System:**Standard:**

Tandem pump, direct-driven by engine, delivers 29 GPM (109 L/min) at 2600 PSI (179 bar) and 34 GPM (129 L/min) at 2500 PSI (172 bar) at 2500 RPM governed engine speed. System protected by relief valves, suction line strainer and 10- micron return line filter. 54-gallon reservoir equipped with breather and locking filler cap. (Maximum pressure on IC-200-3G is 3000 PSI on the 29 GPM (204 L) section of the pump).

Boom Assembly:**Standard:**

Three or four-section, high strength steel construction, equipped with bearing pads for efficient support and extension. Double-acting hydraulic cylinder telescopes booms. The telescope cylinder and the double-acting boom elevation cylinder are equipped with direct-connected holding valves. The four sections on the 3H telescope proportionally. Boom angle indicator is on side of boom.

Boom Swing:**Standard:**

Heavy-duty bearing swing gear with external teeth supports boom. Rotation is powered by hydraulic motor and worm gear drive. Swing gearbox may be adjusted as wear occurs to minimize backlash. Boom is attached by high strength steel weldment.

Boom Hoist:**Standard:**

Turret-mounted planetary gear hoist is hydraulically powered to provide a baredrum line pull of 10,000 pounds (4,536 kg) at a speed of 100-feet-per-minute (30 m/min). Hoist drum is 9 7/8-inch (251 mm) diameter by 16 1/2 inches (419 mm) long. The hoist includes 240 feet (73 m) of wire rope for 2H and 291 feet (89 m) of wire rope for 3H. Wire rope is 1/2-inch (13 mm) diameter. 125-pound (57 kg) downhaul weight and swivel hook are included.

Boom Attachments:**Standard:****Anti-Two-Block Device:**

Prevents damage to hoist rope and/or machine components from accidentally pulling sheave block or downhaul weight against boom tip. Consists of trip arm at boom tip, which is moved upward by sheave block or downhaul weight as hook approaches boom tip. Trip arm actuates electric switch that is connected through cable reel mounted on boom to solenoid dump valve in the hydraulic circuit. This valve will dump the HOIST RAISE, TELESCOPE EXTEND, BOOM LOWER, SWING LEFT and SWING RIGHT circuits. No other circuits are affected. These circuits are returned to normal operation by operating the HOIST LOWER, BOOM RAISE or TELESCOPE RETRACT control. There is also an override keyswitch under the dashboard.

Rated Capacity Limiter:

Operator's aid that warns operator of impending overload with audible and visual signals. Has read-outs for load, boom angle, boom length and load radius. In the event of an overload, dumps the following boom functions: HOIST RAISE, TELESCOPE EXTEND, BOOM LOWER, SWING LEFT and SWING RIGHT. These circuits are returned to normal by lowering load to a safe resting place with hoist or by retracting or raising boom to a shorter load radius. There is also an override switch under the dashboard.

Four-Part-Line Sheave Block:

Double sheave block for 4-part-line requirements. 10-inch (254 mm) O.D. sheaves for 1/2-inch (13 mm) diameter wire rope. Swivel hook with safety latch. 200-pound (95 kg) weight provides positive overhaul. Includes bar on top to actuate trip arm of Anti-Two-Block device.

Optional Boom Attachments:

Boom Extension - 15 Feet (4.6 m), 2H:

Provides 15 feet (4.6 m) of additional length for lifting loads with load line. Boom extension may be stowed alongside base boom section when not in use. Tip sheave, attaching brackets and pins included. Deduct 400 pounds (180 kg) from Capacity Chart when boom extension is in the stowed position. Includes trip arm for Anti-Two-Block device. Net Weight: 520 pounds (236 kg).

Boom Extension - 15 Feet (4.6 m) Offset, 2H:

Provides 15 feet of additional length for lifting loads with load line. Boom extension may be stowed alongside base boom section when not in use. Tip sheave, attaching brackets and pins included. Deduct 400 pounds (180 kg) from Capacity Chart when boom extension is in the stowed position. Includes trip arm for Anti-Two-Block device. Boom extension will tilt through three positions, in line, 15 degree offset and 30 degree offset. Net Weight: 670 pounds (304 kg).

Boom Extension - 16 Feet (5 m) Offset, 3H:

Provides 16 feet (5 m) of additional length for lifting loads with load line. Boom extension may be stowed alongside base boom section when not in use. Tip sheave, attaching brackets and pins included. Deduct 400 pounds from Capacity Chart when boom extension is in the stowed position. Includes trip arm for Anti-Two-Block device. Boom extension will tilt through 3 positions, in line, 15 degree offset and 30 degree offset. Net Weight: 550 pounds (249 kg).

Two-Part-Line Sheave Block:

Single sheave block for 2-part-line requirements. Block is specially designed to reduce height, 23 inches (58 cm) from top to saddle of load hook. 10-inch (254 mm) O.D. sheave for 1/2-inch (13 mm) rope. Swivel hook with safety latch. Includes bar on top to actuate trip arm of Anti-Two-Block device. Net Weight: 124 pounds (56 kg) for 2H and 200 pounds (91 kg) for 3H.

Searcher Hook: (Nose Mount)

5,000 pound capacity hook bracket is attached to the front of the boom tip with 4 pins through the boom extension attachment lugs. A hook with latch is pinned to the tip of the bracket. Net Weight: 65 pounds (29 kg).

*** Specifications subject to change without notice ***

Should you require an option or special equipment not listed please consult your dealer salesperson or BMC[®].

BRODERSON[®]
Manufacturing Corp.
14741 West 106th Street
Lenexa, KS 66215 USA

Tel (913) 888-0606
Fax (913) 888-8431
www.bmccranes.com

Dimensions and values shown are
for reference purposes only.
Specifications subject to change.

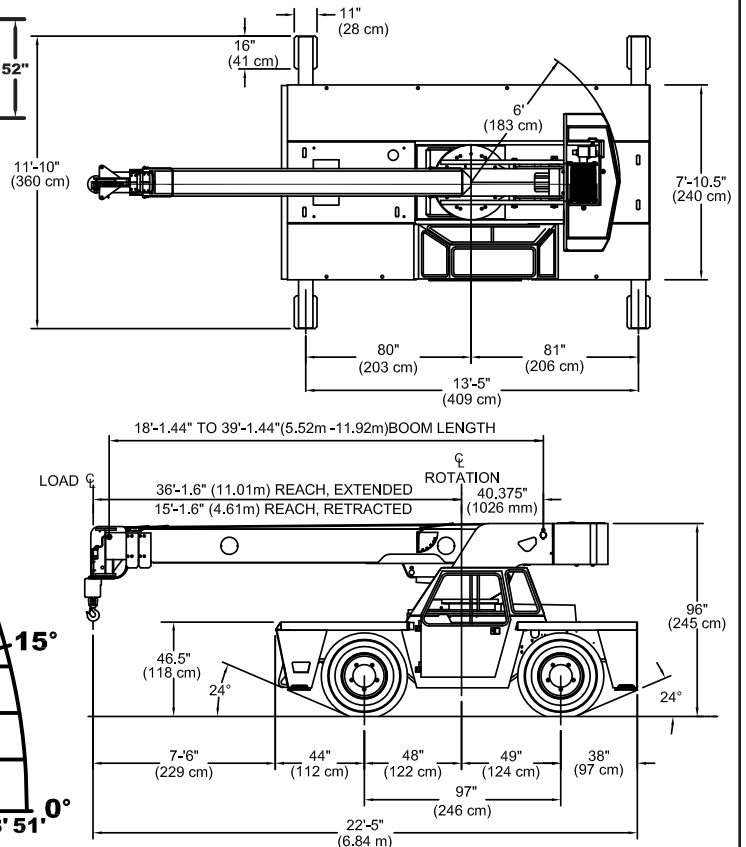
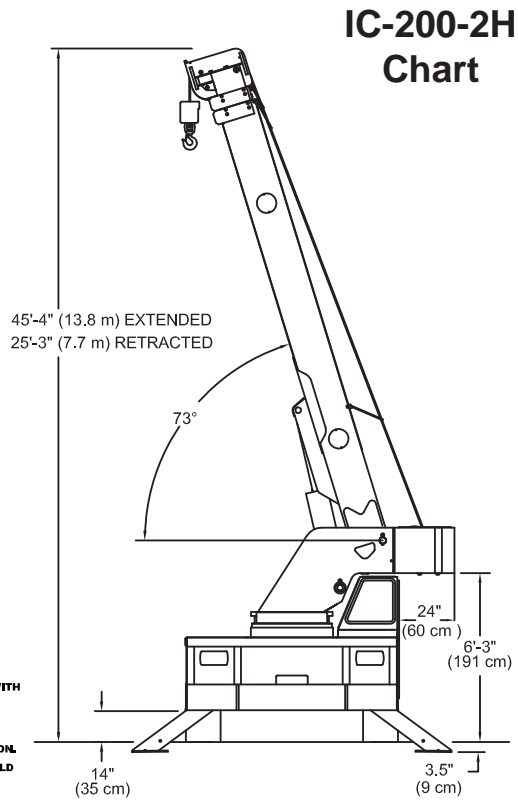
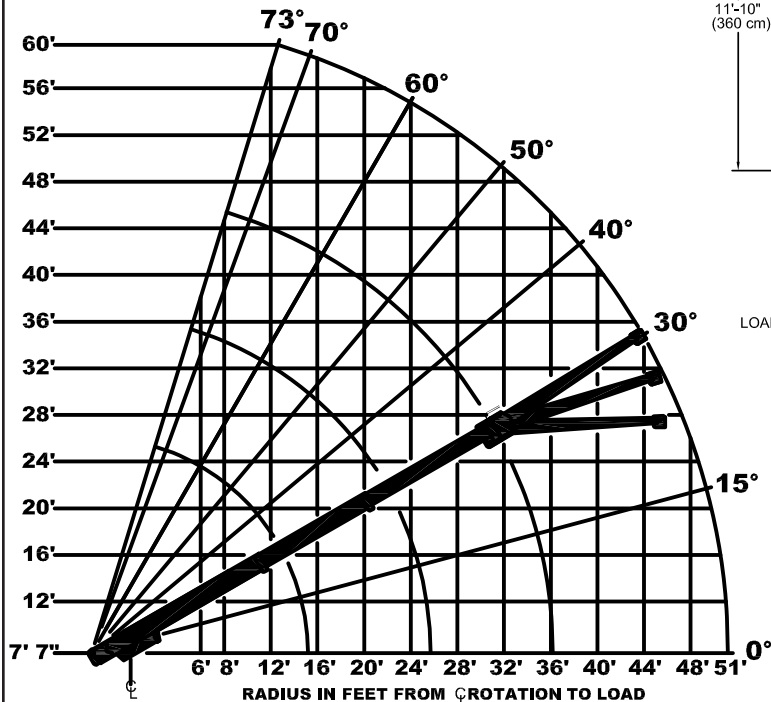
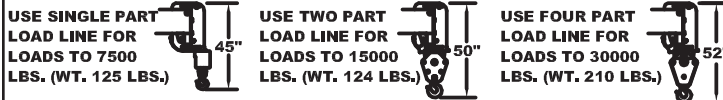


CAPACITIES APPLY TO OPERATION ON FIRM LEVEL SURFACE							
LOAD RADIUS FEET	MAIN BOOM OR EXTENSION CAPACITIES IN POUNDS						
	360° ROTATION		OVER FRONT				
	ON RUBBER	ON OUTRIGGERS	ON RUBBER	ON OUTRIGGERS			
6	16200	30000	17000	30000			
8	13200	24000	13800	24000			
10	10600	19800	11500	19800			
12	7800	16100	9600	16100			
14	6100	13500	7900	13500			
16	4900	11200	6300	11200			
18	4000	10000	5100	10000			
20	3300	8800	4300	8800			
22	2800	7700	3600	7800			
24	2350	6600	3000	6900			
26	2050	5750	2600	6200			
28	1800	5150	2300	5700			
30	1600	4650	2100	5300			
32	1400	4200	1850	4900			
36	1150	3400	1500	4200			
40	900	3050	1200	3600			
44	650	2600	950	3100			
48	450	2200	750	2700			
51	250	1900	600	2400			
15' BOOM EXT.	15-FOOT BOOM EXTENSION - STRAIGHT OR OFFSET						
	EXTENSION ANGLE	MAIN BOOM ANGLE					
		0°	15°	30°	40°	50°	60°
0°	---	3100	3450	3900	4650	6000	7500
15°	---	3000	3100	3300	3650	4250	5200
30°	---	---	3000	3050	3200	3450	3900

LOAD RADIUS IS THE HORIZONTAL DISTANCE FROM THE CENTER OF ROTATION OF THE UNLOADED CRANE TO THE VERTICAL LOAD LINE WITH THE LOAD APPLIED.

EXCEEDING CAPACITY RATINGS OR APPLYING SIDE LOADS TO THE BOOM OR BOOM EXTENSION IS MISUSE, IS HAZARDOUS, AND VOIDS WARRANTY.

CAUTION BOOM EXTENSION LOADS MUST NOT EXCEED MAIN BOOM CAPACITY. DO NOT PICK AND CARRY WITH LOADS ON BOOM EXTENSION. CAPACITIES ON OUTRIGGERS ARE 85% OF TIPPING LOADS. CAPACITIES ON RUBBER ARE 75% OF TIPPING LOADS. CAPACITIES BELOW BOLD LINE ARE LIMITED BY TIPPING. OTHER CAPACITIES ARE LIMITED BY STRUCTURAL OR HYDRAULIC CAPABILITY. BOOM EXTENSION DEDUCT: 400 LBS. WHEN STOWED ON MAIN BOOM.



CAPACITIES IN POUNDS FOR OPERATION ON FIRM LEVEL SURFACE								
LOAD RADIUS FEET	MAIN BOOM ONLY				BOOM EXTENSION			
	ON RUBBER		ON OUTRIGGERS		ON RUBBER		ON OUTRIGGERS	
	360°	FRONT	360°	FRONT	360°	FRONT	360°	FRONT
6	16000	16400	30000	30000	---	---	---	---
8	12500	13000	22400	22400	---	---	---	---
10	10000	10500	18500	18500	7500	7500	7500	7500
12	8050	8700	15700	15700	7500	7500	7500	7500
14	6500	7200	13500	13500	7500	7500	7500	7500
16	5300	6200	10800	10800	6150	7500	7500	7500
18	4450	5400	9550	9550	5000	6450	7500	7500
20	3700	4700	8550	8550	4200	5400	7500	7500
22	3150	4200	7700	7700	3550	4650	6850	6850
24	2650	3700	6950	6950	3050	4000	6250	6250
26	2300	3200	6300	6350	2650	3500	5750	5750
28	1950	2800	5550	5800	2300	3100	5300	5300
30	1700	2450	4800	5300	2000	2700	4900	4900
32	1450	2150	4200	4900	1700	2400	4550	4550
34	1250	1850	3700	4500	1500	2100	4250	4250
38	900	1300	2950	3850	1150	1650	3500	3750
42	650	950	2400	3350	850	1300	2950	3350
46	400	650	1850	2900	600	1050	2450	2950
50	0	550	1750	2500	400	800	2050	2600
54	---	---	---	---	0	600	1700	2300
58	---	---	---	---	0	400	1350	2000
62	---	---	---	---	0	300	1150	1750
66	---	---	---	---	0	0	900	1500

BOOM EXT. ANGLE	BOOM EXTENSION - STRAIGHT OR OFFSET							
	MAIN BOOM ANGLE							
	0°	15°	30°	40°	50°	60°	70°	
0°	3000	3100	3450	3900	4650	6000	7500	
15°	---	3000	3000	3000	3000	3700	5000	
30°	---	---	2500	2500	2600	3100	3800	

LOAD RADIUS IS THE HORIZONTAL DISTANCE FROM THE CENTER OF ROTATION OF THE UNLOADED CRANE TO THE VERTICAL LOAD LINE WITH THE LOAD APPLIED.

EXCEEDING CAPACITY RATINGS OR APPLYING SIDE LOADS TO THE BOOM OR BOOM EXTENSION IS MISUSE, IS HAZARDOUS, AND VOIDS WARRANTY.

CAUTION BOOM EXTENSION LOADS MUST NOT EXCEED MAIN BOOM CAPACITY. DO NOT PICK AND CARRY WITH LOADS ON BOOM EXTENSION. CAPACITIES ON OUTRIGGERS ARE 85% OF TIPPING LOADS, CAPACITIES ON RUBBER ARE 75% OF TIPPING LOADS, CAPACITIES BELOW BOLD LINE ARE LIMITED BY TIPPING. OTHER CAPACITIES ARE LIMITED BY STRUCTURAL OR HYDRAULIC CAPABILITY. BOOM EXTENSION DEDUCT: 400 LBS. WHEN STOWED ON MAIN BOOM.

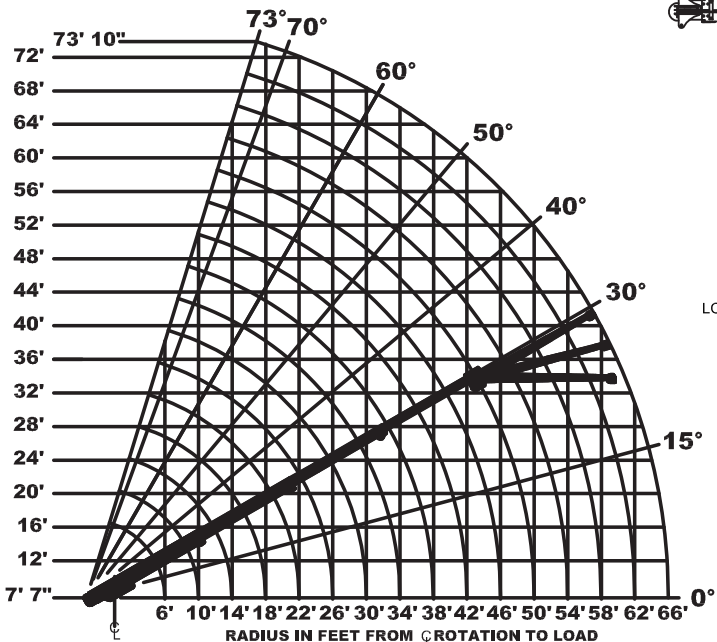
USE SINGLE PART LOAD LINE FOR LOADS TO 7500 LBS. (WT. 125 LBS.)



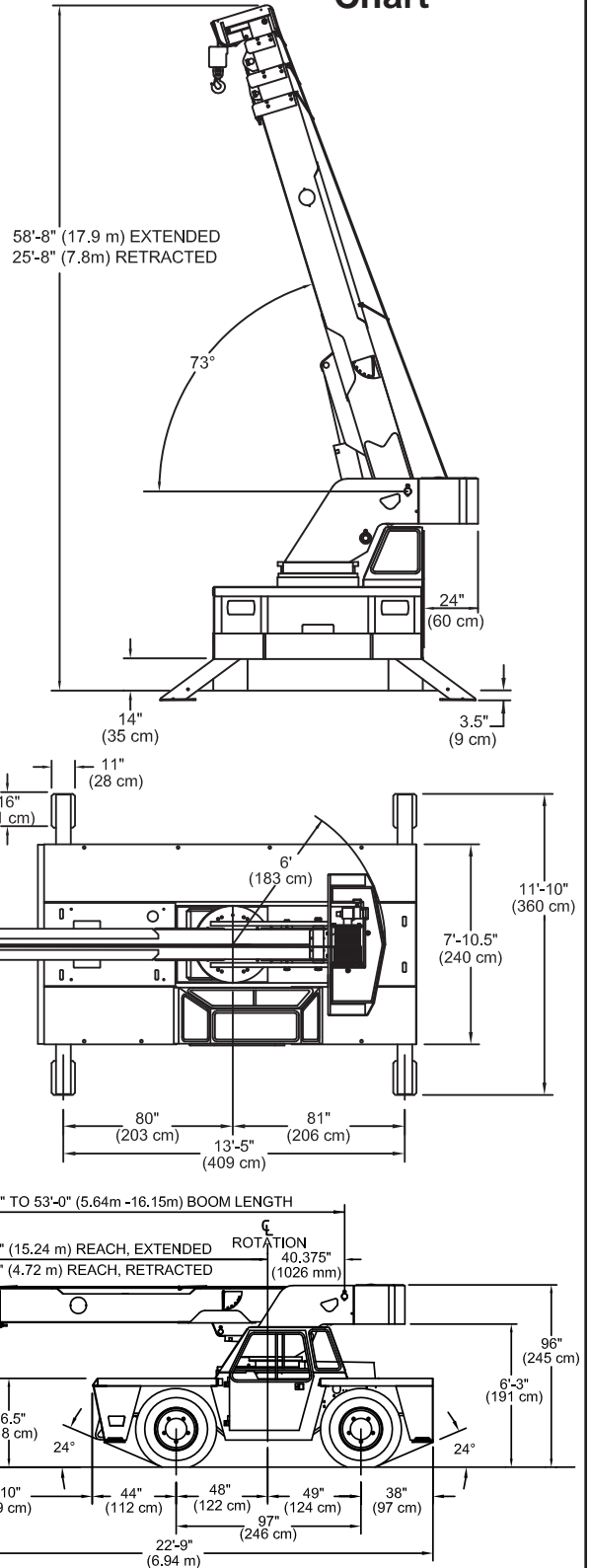
USE TWO PART LOAD LINE FOR LOADS TO 15000 LBS. (WT. 200 LBS.)



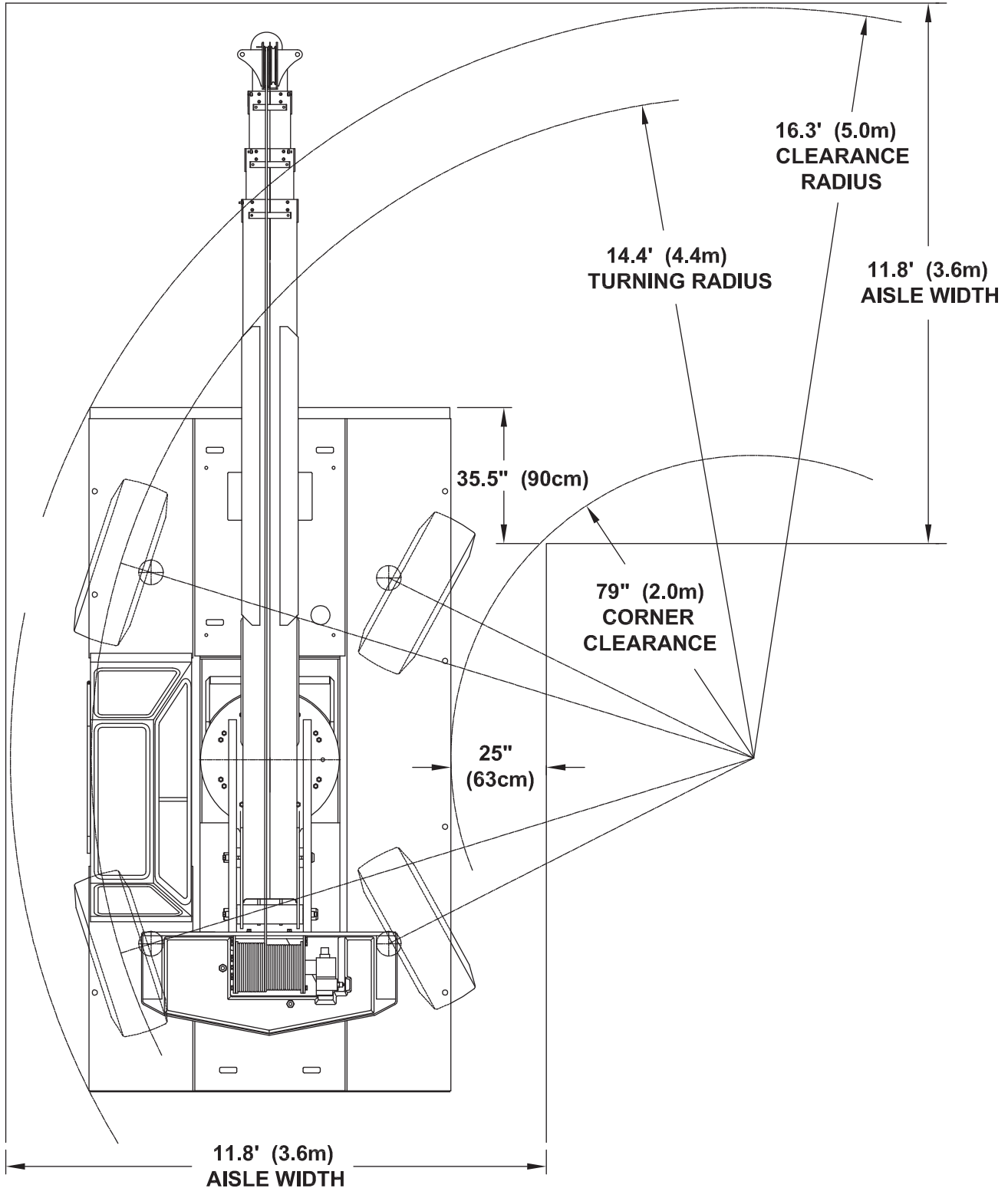
USE FOUR PART LOAD LINE FOR LOADS TO 30000 LBS. (WT. 210 LBS.)



IC-200-3H Chart

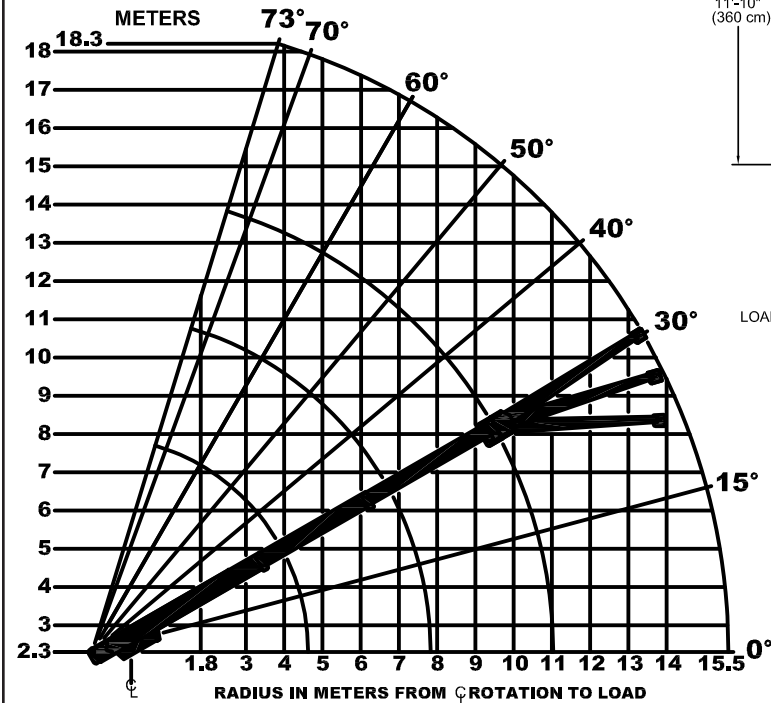
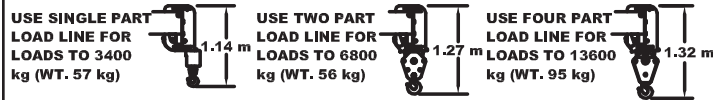


**IC-200-H
Turn Chart**

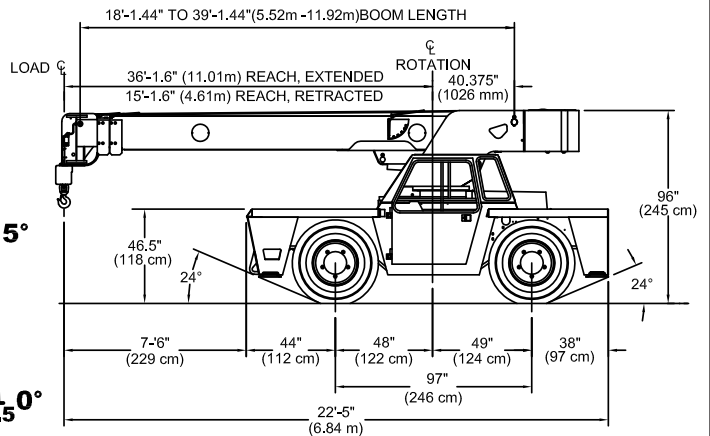
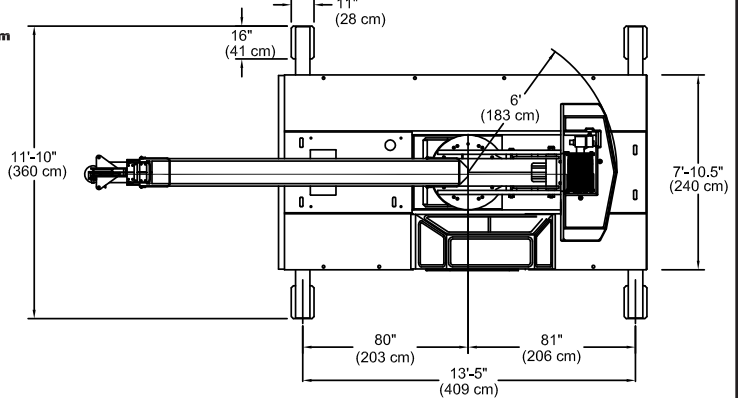
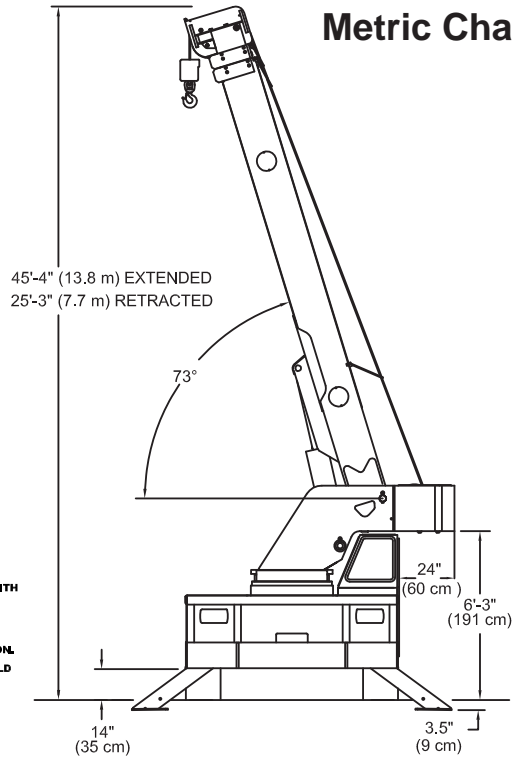


CAPACITIES APPLY TO OPERATION ON FIRM LEVEL SURFACE							
LOAD RADIUS METERS	MAIN BOOM OR EXTENSION CAPACITIES IN KILOGRAMS						
	360° ROTATION		OVER FRONT				
	ON RUBBER	ON OUTRIGGERS	ON RUBBER	ON OUTRIGGERS			
1.8	7350	13600	7710	13600			
2.0	6940	12700	7240	12700			
2.5	5870	10700	6150	10700			
3.0	4900	9120	5290	9120			
3.5	3850	7690	4560	7690			
4.0	3040	6620	3920	6620			
4.5	2540	5700	3300	5700			
5.0	2130	4970	2720	4970			
6.0	1540	4080	2000	4080			
7.0	1170	3250	1490	3330			
8.0	910	2570	1160	2780			
9.0	750	2160	970	2450			
10.0	610	1820	800	2150			
11.0	520	1530	680	1900			
12.0	420	1410	560	1670			
13.0	330	1250	460	1470			
14.0	250	1090	390	1320			
15.0	170	940	310	1170			
15.5	120	870	270	1090			
4.5 m BOOM EXT.	4.5 m BOOM EXTENSION - STRAIGHT OR OFFSET						
	MAIN BOOM ANGLE						
	ANGLE	0°	15°	30°	40°	50°	60°
0°	---	1400	1560	1770	2110	2720	3400
15°	---	1360	1400	1500	1650	1930	2360
30°	---	---	1360	1380	1450	1560	1770

LOAD RADIUS IS THE HORIZONTAL DISTANCE FROM THE CENTER OF ROTATION OF THE UNLOADED CRANE TO THE VERTICAL LOAD LINE WITH THE LOAD APPLIED.
EXCEEDING CAPACITY RATINGS OR APPLYING SIDE LOADS TO THE BOOM OR BOOM EXTENSION IS MISUSE, IS HAZARDOUS, AND VOIDS WARRANTY.
CAUTION BOOM EXTENSION LOADS MUST NOT EXCEED MAIN BOOM CAPACITY. DO NOT PICK AND CARRY WITH LOADS ON BOOM EXTENSION. CAPACITIES ON OUTRIGGERS ARE 85% OF TIPPING LOADS. CAPACITIES ON RUBBER ARE 75% OF TIPPING LOADS. CAPACITIES BELOW BOLD LINE ARE LIMITED BY TIPPING. OTHER CAPACITIES ARE LIMITED BY STRUCTURAL OR HYDRAULIC CAPABILITY.
BOOM EXTENSION DEDUCT: 400 LBS. WHEN STOWED ON MAIN BOOM.



IC-200-2H Metric Chart



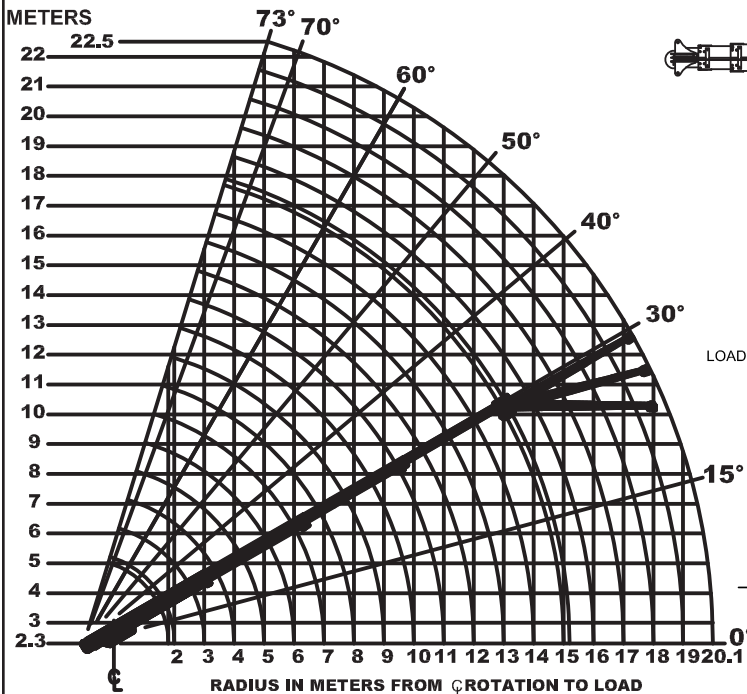
CAPACITIES IN KILOGRAMS FOR OPERATION ON FIRM LEVEL SURFACE								
LOAD RADIUS METERS	MAIN BOOM ONLY				BOOM EXTENSION			
	ON RUBBER		ON OUTRIGGERS		ON RUBBER		ON OUTRIGGERS	
	360°	FRONT	360°	FRONT	360°	FRONT	360°	FRONT
1.8	7260	7440	13600	13600	---	---	---	---
2.0	6730	6940	12100	12100	---	---	---	---
2.5	5550	5780	9970	9970	---	---	---	---
3.0	4610	4840	8510	8510	3400	3400	3400	3400
3.5	3860	4140	7410	7410	3400	3400	3400	3400
4.0	3230	3540	6560	6560	3400	3400	3400	3400
4.5	2720	3070	5670	5670	3200	3400	3400	3400
5.0	2320	2730	4750	4750	2680	3300	3400	3400
5.5	2010	2440	4320	4320	2260	2910	3400	3400
6.0	1720	2170	3940	3940	1950	2520	3400	3400
7.0	1310	1790	3320	3320	1490	1960	2970	2970
8.0	1020	1420	2810	2850	1180	1560	2580	2580
9.0	800	1140	2260	2450	940	1260	2260	2270
10.0	620	920	1810	2150	730	1030	2010	2000
11.0	480	700	1480	1870	590	830	1760	1800
12.0	370	530	1250	1660	470	690	1500	1640
13.0	270	410	1050	1480	360	570	1300	1490
14.5	120	260	790	1240	230	430	1040	1270
15.3	0	250	790	1130	180	360	930	1180
17.0	---	---	---	---	0	240	700	980
18.0	---	---	---	---	0	160	590	870
19.0	---	---	---	---	0	130	510	780
20.1	---	---	---	---	0	0	410	680
BOOM EXT. ANGLE	BOOM EXTENSION - STRAIGHT OR OFFSET							
	MAIN BOOM ANGLE							
	0°	15°	30°	40°	50°	60°	70°	
0°	1360	1400	1560	1770	2110	2720	3400	
15°	---	1360	1360	1360	1360	1680	2270	
30°	---	---	1130	1130	1180	1410	1720	

LOAD RADIUS IS THE HORIZONTAL DISTANCE FROM THE CENTER OF ROTATION OF THE UNLOADED CRANE TO THE VERTICAL LOAD LINE WITH THE LOAD APPLIED.

EXCEEDING CAPACITY RATINGS OR APPLYING SIDE LOADS TO THE BOOM OR BOOM EXTENSION IS MISUSE, IS HAZARDOUS, AND VOIDS WARRANTY.

CAUTION BOOM EXTENSION LOADS MUST NOT EXCEED MAIN BOOM CAPACITY. DO NOT PICK AND CARRY WITH LOADS ON BOOM EXTENSION. CAPACITIES ON OUTRIGGERS ARE 85% OF TIPPING LOADS. CAPACITIES ON RUBBER ARE 75% OF TIPPING LOADS. CAPACITIES BELOW BOLD LINE ARE LIMITED BY TIPPING. OTHER CAPACITIES ARE LIMITED BY STRUCTURAL OR HYDRAULIC CAPABILITY.

BOOM EXTENSION DEDUCT: 400 LBS. WHEN STOWED ON MAIN BOOM.



IC-200-3H Metric Chart

